

SHOULD I BRING MY LOVED ONE’S PET TO VISIT?

Yes, of course, pets can visit. There are very few residents who don’t enjoy a pet visit, especially if it’s their own. It’s very much like having any other family member visit. But be aware that a furry loved one can potentially create different reactions. If your loved one doesn’t remember their dog but just loves having a dog visit, then go for it. Don’t even try to convince them that it’s their dog. Just be in the moment with your loved one and their furry friend.

As your loved one progresses in their dementia, they may not recognize the pet and could become upset at the pet’s behavior. It’s difficult to know how your loved one will react to sudden barking or jumping.

In this case, finding a loveable stuffed dog or cat that resembles their pet is a great way to transition them. They’ll love the security of having their “pet” with them all the time without worrying about the pet’s reactions. Our residents live in snapshots. The goal is to always make the current snapshot where they are better than the one that just occurred.

COMMON TYPES OF DEMENTIA



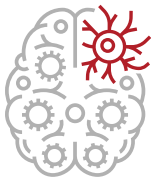
ALZHEIMER’S DISEASE

Accumulation of the protein beta-amyloid outside neurons and twisted strands of the protein tau inside neurons are hallmarks and accompanied by the death of neurons and damage to brain tissue.



HIPPOCAMPAL SCLEROSIS (HS)

HS is the shrinkage and hardening of tissue in the hippocampus of the brain. The hippocampus plays a key role in forming memories.



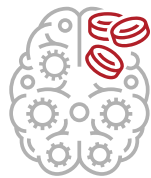
CEREBROVASCULAR DISEASE

Blood vessels in the brain are damaged and/or brain tissue is injured from not receiving enough blood, oxygen or nutrients.



PARKINSON’S DISEASE (PD)

Clumps of the protein alpha-synuclein appear in an area deep in the brain called the substantia nigra. These clumps are thought to cause degeneration of the nerve cells that produce the chemical dopamine.



LEWY BODY DISEASE

Lewy bodies are abnormal aggregations (or clumps) of the protein alpha-synuclein in neurons. When they develop in a part of the brain called the cortex, dementia can result.



FRONTOTEMPORAL DEGENERATION (FTD)

Nerve cells in the front and temporal (side) lobes of the brain die and the lobes shrink. Upper layers of the cortex soften.

QUICK LINKS

LIVING WELL

MEMORY CARE EDITION.

WILDWOOD VILLAGE

JUNE 2025

THREATENING SPEECH OR ACTIONS

As dementia progresses, a resident may sometimes behave in ways that are physically or verbally aggressive to those around them. This includes making fists, tightening their grip on a caregiver or using angry verbal expressions. This can be distressing for all involved.

A few signs you'll want to be on the lookout for include a resident walking quickly towards a team member and standing close to them with a glaring expression on their face. Some phrases they may use when yelling are “I hate you,” or “I’ll hit you!” Words no one wants to hear, but this kind of behavior may escalate if not properly addressed and can lead to self-harm or harming of others.

When this type of threatening behavior occurs, try using a gentle and firm redirection to a different topic or activity. Determine if the resident is acting out because they’re hungry, thirsty, in pain or need to use the bathroom. It’s best to approach the person slowly and use a calm voice to identify the behavior out loud. Ask the resident to “please stop” and assist the person to an environment that’s comfortable, with low lighting, soft music and quiet. Take this moment to reflect on pleasant memories with the resident.

FINDING A RESIDENT IN YOUR LOVED ONE’S ROOM

It’s common to find a resident has wandered into your loved one’s room. This type of behavior is not driven by the person but rather by the disease. This resident had no intention of purposely entering your loved one’s room. It happens and most families have experienced it.

Wandering is a part of the disease process but not meant to be intrusive. That’s why we have secured environments for those living with dementia.

If you happen to find a resident has walked into your loved one’s room, just say hello as if it were completely normal. It’s better to not overreact or tell the resident to stay away from your loved one. Remain calm and if the resident doesn’t leave the room on their own, find a care team member to help redirect them.



JUNE 2025 EVENTS

- 6/4, 2-3P, Robert Row
- 6/15. 1P, Tom Winter Music
- 6/15, Fathers Day
- 6/25, Veronica Borek Music
- 6/12 & 6/26, Music Therapy
- 6/17, Pet Therapy @ 10:30A
- Concert Series Every Fri @ 3p

SUNDAY		MONDAY		TUESDAY		WEDNESDAY		THURSDAY		FRIDAY		SATURDAY						
<div><div></div><div>June 2025</div></div>																		
01		02		03		04		05		06		07						
9:00a 10:00a 10:30a 2:30p 3:00p 6:00p	Good News Network Weekend Workout St.Alben Roe Church Sunday Gentle Music Life Station Exploration Tune & Tint: A Creative Escape	AR	9:00a 10:00a 11:00a 1:30p 2:00p 3:00p Dozen	Good News Network Morning Flow on the Patio Family Feud Daily Devotional Bingo Classic Cinema: Cheaper by The Dozen	AR AR AR MCD	9:00a 10:00a 10:30a 11:00a 2:00p 3:00p 6:00p	Good News Network Chicken Soup for the Father's Soul Balloon Volleyball Puzzle Club Animal Trivia: Dogs Craft Time: Flower Pots Hand Massages	MCL AR MCD	9:00a 10:30a 10:30a 1:30p 2:00p 3:00p 6:00p Massages	Good News Network Noodle Ball Music Trivia Daily Devotional Scenic Ride: Butterfly House Holiday Fun: Constitution Day Aromatherapy: Hand & Back Massages	AR OUT AR MCL	9:00a 10:00a 11:00a 2:00p 3:00p 6:00p	Good News Network Exercise with Ben Reminiscing: Occupations The Life of Whitney Houston Concert: Whitney Houston Hand Massages	AR MCL	9:00a 10:00a 10:00a 11:00a 1:30p 3:00p	Good News Network TV Service: Sunday Morning Praise Weekend Workout Puzzle Club Coffee & Conversations Life Station Exploration		
08		09		10		11		12		13		14						
FLAG DAY		9:00a 10:00a 10:30a 11:30a 2:30p 3:00p	Good News Network Weekend Workout St.Alben Roe Church Junk Drawer Detective Sunday Gentle Music Life Station Exploration	AR	9:00a 10:00a 11:00a 1:30p 2:00p 3:00p	Good News Network Morning Flow on the Patio Family Feud Daily Devotional Bingo Classic Cinema: Big	AR AR AR MCD	9:00a 10:00a 10:30a 11:00a 1:00p 2:00p 3:00p 6:00p	Good News Network Chicken Soup for the Father's Soul Balloon Volleyball Puzzle Club Animal Trivia: Cats Hand Massages	MCL AR	9:00a 10:30a 10:30a 1:30p 2:00p 3:00p 6:00p Hamilton 6:00p Massages	Good News Network Stretching Club Music Therapy with Kelly Daily Devotional Pet Therapy with Jupiter Holiday Fun: The Life of Alexander Hamilton Aromatherapy: Hand & Back Massages	AR AR MCL	9:00a 10:00a 11:00a 2:00p 3:00p 6:00p	Good News Network Exercise with Ben Reminiscing: Occupations The Life of Johnny Cash Concert: Johnny Cash Hand Massages	AR MCL	9:00a 10:00a 10:00a 11:00a 1:30p 3:00p	Good News Network Weekend Workout Trivia: Random Facts Puzzle Club Coffee & Conversations Life Station Exploration
15		16		17		18		19		20		21						
FATHER'S DAY		9:00a 10:00a 10:30a 1:00p MPD 1:30p 2:30p 3:00p	Good News Network Weekend Workout St.Alben Roe Church Entertainment: Tom Winters Fathers Day Trivia Sunday Gentle Music Life Station Exploration	AR	9:00a 10:00a 11:00a 1:30p 2:00p 3:00p Bride	Good News Network Morning Flow on the Patio Family Feud Daily Devotional Bingo Classic Cinema: Father of The Bride	AR AR AR MCD	9:00a 10:00a 10:30a 11:00a 1:00p 2:00p 3:00p 6:00p	Good News Network Chicken Soup for the Father's Soul & Pet Therapy Balloon Volleyball Puzzle Club Animal Trivia: Snakes Craft Time: Sunflower Coasters Hand Massages	AR MCL AR	9:00a 10:30a 10:30a 11:00a 1:30p 3:00p 6:00p Massages	Good News Network Noodle Ball Music Trivia Outing: Red Robin Daily Devotional Holiday Fun: Juneteenth Aromatherapy: Hand & Back Massages	AR AR MCL	9:00a 10:00a 11:00a 2:00p 3:00p 6:00p	Good News Network Exercise with Ben Reminiscing: Occupations The Life of Dolly Parton Concert: Dolly Parton Hand Massages	AR MCL	9:00a 10:00a 10:00a 11:00a 1:30p 3:00p	Good News Network TV Service: Sunday Morning Praise Weekend Workout Puzzle Club Coffee & Conversations Life Station Exploration
22		23		24		25		26		27		28						
9:00a 10:00a 10:30a 11:30a 2:30p 3:00p	Good News Network Weekend Workout St.Alben Roe Church Junk Drawer Detective Sunday Gentle Music Life Station Exploration	AR	9:00a 10:00a 11:00a 1:30p 2:00p 3:00p MCD	Good News Network Morning Flow on the Patio Family Feud Daily Devotional Bingo Classic Cinema: Mr Hollands Opus	AR AR AR MCD	9:00a 10:00a 10:30a 11:00a 2:00p 6:00p	Good News Network Chicken Soup for the Father's Soul Balloon Volleyball Puzzle Club Animal Trivia: Apes Hand Massages	MCL AR	9:00a 10:00a 10:30a 1:30p 3:00p 6:00p Forgiveness 6:00p Massages	Good News Network Stretching Club Music Therapy with Kelly Daily Devotional Holiday Fun: The Phycology of Forgiveness Aromatherapy: Hand & Back Massages	AR AR MCL	9:00a 10:00a 11:00a 2:00p 3:00p 6:00p	Good News Network Exercise with Ben Reminiscing: Occupations The Life of Julie Andrews Concert: Julie Andrews Hand Massages	AR MCL	9:00a 10:00a 11:00a 1:30p 3:00p	Good News Network Weekend Workout Prize Bingo Puzzle Club Coffee & Conversations Life Station Exploration		
29		30		BIRTHDAYS								LOCATION KEY						
9:00a 10:00a 10:30a 2:30p 3:00p 6:00p	Good News Network Weekend Workout St.Alben Roe Church Sunday Gentle Music Life Station Exploration Tune & Tint: A Creative Escape	AR	9:00a 10:00a 11:00a 1:30p 2:00p 3:00p	Good News Network Morning Flow on the Patio Family Feud Daily Devotional Bingo Classic Cinema: Hello, Dolly!	AR AR AR MCD							2BL 2 nd Floor Balcony AR Activity Room B Bistro DR Dining Room DRP Dining Room Patio FIT Fitness Center	MCD Memory Care Dining MCL Living Room MCP Memory Care Patio MPD Memory Care Private Dining Room OUT Outing	S Salon THR Theatre				

All activities subject to change.