

CONTACTS

**Executive Director**  
Kathleen Nardoni  
knardoni@americanhouse.com

**Life Enrichment Director**  
Dana Perry  
dperry@americanhouse.com

**Wildwood Village After Hours Number**  
(636) 484-3382

**Director of Nursing**  
Johane Lindel  
(636) 399-3540

**Memory Care Director**  
Ben Flores  
BFlores@americanhouse.com

National Suicide Hotline  
988

Alzheimers Association  
1-800-272-3900



**American House  
Wildwood Village**  
251 Plaza Drive  
Wildwood | MO | 63040  
636.538.2128  
**AmericanHouse.com**



1964: THE NEW YORK WORLD’S FAIR

On April 22, 1964, President Lyndon B. Johnson opened the New York World’s Fair in Flushing Meadows Corona Park in Queens with the theme of the event: “Peace Through Understanding.” The president said this idea was in the hands of the people of the world and would be the focus of the event until the World’s Fair’s last day, on October 22, 1965.



Spanning over 650 acres, the World Fair featured more than 140 pavilions, 110 restaurants and 45 exhibits from corporations around the world to display their goals and accomplishments. More than 51 million visitors attended the event and it was considered a pinnacle of mid-20th century American culture and technology.

The World’s Fair showcased products that would advance the transportation and consumer electronic markets in a way that would never be repeated at future World’s Fairs. Corporate America was well-represented, with one of the more memorable exhibits being General Motors’ “Futurama,” presenting colorful and imaginative views of future society.

Quote of the Month

“LAUGHTER IS AN INSTANT VACATION.”

~ MILTON BERLE

250 YEARS STRONG

The U.S. Army will celebrate its 250<sup>th</sup> birthday on June 14, commemorating the Armed Forces’ distinguished service to our nation. The central theme for this year’s celebration is “This We’ll Defend,” a battle cry first used by the Continental Army. It’s meant to remind Americans that our Army’s purpose is clear: to fight and win our nation’s wars.

The Army remains committed to honing warfighting skills, enforcing discipline and living the values defined by the culture. The 250th birthday will be celebrated with a series of commemorations, including leadership engagements, community outreach events and other events showcasing Army units, history, lineage and esprit de corps.

Established June 14, 1775, the Army is a year older than the United States itself. Since its establishment, soldiers, families and civilians have supported our country, bearing faith and allegiance to the country, the Constitution, their units and fellow team members as they defend the nation and help in times of need.



FOLLOW US ON FACEBOOK

LIVING WELL  
INSPIRING A HAPPIER, HEALTHIER YOU.

WILDWOOD VILLAGE

JUNE 2025

A BLESSING TO THE COMMUNITY

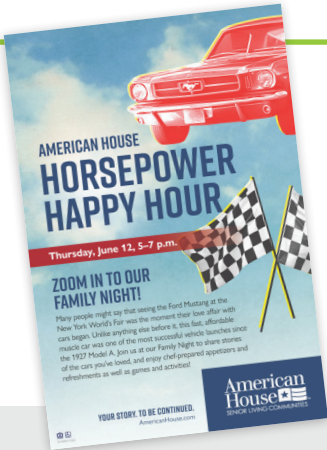
Life Enrichment Director Daisy Godbee, who has been at American House Fort Myers since before the building opened, often brags about the very first resident to move in over seven years ago. His name is Art and he likes to say he’s from a “small town called Brooklyn, New York.”

“One day I needed help,” Daisy said. “I asked Art if he’d lead an exercise class and he didn’t hesitate. It started with one class a week, but it was so popular it quickly became three classes per week. Then one day Art asked if he could help the residents in memory care. It really touched my heart. Art now conducts five classes a week for our residents with 12 to 20 residents per class. It’s not surprising he’s our Resident Ambassador.”



Art earned degrees in physical therapy from both State University of New York at Cortland and Columbia University. He loved his 50-year career as a physical therapist in both New York and Florida. He believes the key to his classes is working all the major muscles in the body, but perhaps more importantly, to have fun. He’s been living at American House for seven years and loves it. But maybe not as much as the residents love having him. Daisy said Art is “truly a godsend to the community.”

If you’re interested in being a part of the Resident Ambassador Society, please reach out to your Life Enrichment Director.



JUNE 2025 EVENTS

- Thursday 6/12 Family Night
- Friday 6/14 Flag Day
- Friday 6/14 Fathers Day Brunch
- Sunday 6/15 Fathers Day
- Thursday 6/19 Juneteenth
- 6/12-6/18 CNA Week
- Friday 6/20 The Longest Day

CELEBRATING FRONTLINE HEROES

CNA Week takes place from June 12 to 18 and is a time to celebrate the contributions of Certified Nursing Assistants (CNAs) in health care. They began working under the Red Cross program during World War II and have served alongside U.S. Army nurses to care for wounded soldiers—and their important work continues to this day. The theme for 2025 is “We Are the Champions” to highlight CNAs as the frontline heroes of patient care. They play a vital role in health care, providing personal care, emotional support and clinical assistance to patients. Bravo!



SUNDAY		MONDAY		TUESDAY		WEDNESDAY		THURSDAY		FRIDAY		SATURDAY				
<div><div></div><div>June 2025</div></div>																
01		02		03		04		05		06		07				
8:30a <b>B</b>	Sunday Funnies, and Crosswords	9:00a	Weekly News	<b>B</b>	9:00a	Senior Yoga	<b>AR</b>	9:00a	Senior Yoga	<b>AR</b>	9:00a	Wake up and Stretch	<b>AR</b>	10:30a	Saturday Meditation	<b>THR</b>
10:30a	St.Alben Roe Church	10:30a	Noodle Volleyball	<b>AR</b>	10:30a	Pizza Ranch Buffet for Lunch	<b>OUT</b>	11:00a	Wildwood Warriors Group	<b>2BL</b>	9:30a	Horoscopes	<b>AR</b>	1:00p	Rummikub	<b>B</b>
2:00p	Rummikub and Puzzles	2:30p	Bingo	<b>B</b>	2:30p			1:30p	Paint by Numbers	<b>AR</b>	10:30a	Manicures	<b>AR</b>	2:00p	Saturday Cinema	<b>THR</b>
3:30p	Cornhole League	3:30p	Walk to Rose Garden	<b>AR</b>	1:30p	Book Bingo at Local Library	<b>OUT</b>	3:30p	Wine Down Wednesday	<b>B</b>	2:00p	Gardening Club	<b>AR</b>	2:00p	Music with Bill Lynch	<b>DR</b>
5:30p	Sunday Show- Virgin River	5:30p	Checkers/Puzzles	<b>THR</b>	3:30p	Puzzles in the Bistro	<b>B</b>	5:30p	Crosswords and Word Games	<b>THR</b>	3:00p	Happy Hour with Fred Lloyd	<b>DR</b>	5:30p	Card Games	<b>B</b>
08		09		10		11		12		13		14				
FLAG DAY																
8:30a <b>B</b>	Sunday Funnies, and Crosswords	9:00a	Weekly News	<b>B</b>	9:00a	Senior Yoga	<b>AR</b>	9:00a	Senior Yoga	<b>AR</b>	9:00a	Pancake Breakfast with Dad	<b>DR</b>	10:30a	Saturday Meditation	<b>THR</b>
10:30a	St.Alben Roe Church	10:30a	Noodle Volleyball	<b>FIT</b>	10:30a	Fitzs for Lunch	<b>OUT</b>	10:00a	Walmart Shopping	<b>OUT</b>	9:00a	Wake up and Stretch	<b>AR</b>	1:00p	Rummikub	<b>B</b>
2:00p	Rummikub and Puzzles	2:30p	Bee Talk with Luz Rooney	<b>AR</b>	2:30p	Bingo	<b>AR</b>	1:30p	Paint by Numbers	<b>AR</b>	10:30a	Horoscopes	<b>DR</b>	1:30p	Scrabble	<b>AR</b>
3:30p	Cornhole League	4:00p	Watermelon on the Patio	<b>2BL</b>	3:30p	Jewelry Making	<b>AR</b>	3:00p	Wine Down Wednesday	<b>B</b>	2:00p	Cooking Class with Chef	<b>AR</b>	2:00p	Saturday Cinema	<b>THR</b>
5:30p	Sunday Show- Virgin River	5:00p	Board Games in the Bistro	<b>B</b>	5:00p	Documentary Film	<b>THR</b>	5:30p	Crosswords and Word Puzzles	<b>B</b>	3:00p	Happy Hour with John Scott	<b>DR</b>	5:30p	Card Games	<b>B</b>
15		16		17		18		19		20		21				
FATHER'S DAY								JUNETEENTH		THE LONGEST DAY						
8:30a <b>B</b>	Sunday Funnies, and Crosswords	9:00a	Weekly News	<b>B</b>	9:00a	Senior Yoga	<b>AR</b>	9:00a	Senior Yoga	<b>AR</b>	9:00a	Wake up and Stretch	<b>AR</b>	10:30a	Saturday Meditation	<b>THR</b>
10:30a	St.Alben Roe Church	10:00a	Chocolate Chocolate Chocolate	<b>OUT</b>	10:30a	Movie Theatre Trip- Chesterfield	<b>OUT</b>	10:00a	Brunch at Letty Lous Cafe	<b>OUT</b>	9:30a	Horoscopes	<b>B</b>	1:00p	Rummikub	<b>B</b>
2:00p	Rummikub and Puzzles	Trip			Cinema			1:30p	Jaws Movie- 50th Anniversary	<b>THR</b>	2:00p	Milkshakes and Music	<b>B</b>	1:30p	Scrabble	<b>AR</b>
3:30p	Cornhole League	2:30p	Bingo	<b>AR</b>	2:00p	Room with a Bloom	<b>AR</b>	3:00p	Jaws Trivia and Fun Facts	<b>THR</b>	3:00p	Happy Hour with J Monet Trio	<b>DR</b>	2:00p	Saturday Cinema	<b>THR</b>
5:30p	Sunday Show- Virgin River	3:30p	Popsicles on the Patio	<b>AR</b>	3:30p	Jewelry Making	<b>AR</b>	5:30p	Uno	<b>B</b>	6:30p	Wildwood Concert Series- Fat	<b>OUT</b>	5:30p	Card Games	<b>B</b>
		5:30p	Checkers/Puzzles	<b>B</b>	5:30p	Documentary Film	<b>THR</b>				Pocket					
22		23		24		25		26		27		28				
8:30a <b>B</b>	Sunday Funnies, and Crosswords	9:00a	Weekly News	<b>B</b>	9:00a	Senior Yoga	<b>AR</b>	9:00a	Senior Yoga	<b>AR</b>	9:00a	Wake up and Stretch	<b>AR</b>	10:30a	Saturday Meditation	<b>THR</b>
10:30a	St.Alben Roe Church	10:30a	Noodle Volleyball	<b>FIT</b>	10:30a	Women's Shopping Group-	<b>OUT</b>	10:00a	Mauhaus Cat Cafe	<b>OUT</b>	9:30a	Horoscopes	<b>AR</b>	1:00p	Rummikub	<b>B</b>
2:00p	Rummikub and Puzzles	1:30p	Wildwood Warriors Group	<b>B</b>	Kohls	Bingo	<b>OUT</b>	1:30p	Resident Townhall	<b>DR</b>	10:30a	Coffee Convo	<b>B</b>	1:30p	Scrabble	<b>AR</b>
3:30p	Cornhole League	3:00p	Jim McClaren Entertainment	<b>DR</b>	2:30p	Smoothie Bar	<b>AR</b>	3:00p	Walk to the Rose Garden	<b>B</b>	2:00p	New Resident Welcome Meeting	<b>AR</b>	2:00p	Saturday Cinema	<b>THR</b>
5:30p	Sunday Show- Virgin River	6:00p	Cardinals Game Watch Party	<b>THR</b>	3:30p	Documentary Film	<b>B</b>	5:30p	Card Games	<b>B</b>	6:00p	Cardinals Game Watch Party	<b>THR</b>	5:30p	Card Games	<b>B</b>
29		30		BIRTHDAYS								LOCATION KEY				
8:30a <b>B</b>	Sunday Funnies, and Crosswords	9:00a	Weekly News	<b>B</b>	Linda B. 6/7							<div><div>2BL 2<sup>nd</sup> Floor Balcony</div><div>AR Activity Room</div><div>B Bistro</div><div>DR Dining Room</div><div>DRP Dining Room Patio</div><div>FIT Fitness Center</div></div> <div><div>MCD Memory Care Dining</div><div>MCL Living Room</div><div>MCP Memory Care Patio</div><div>MPD Memory Care Private Dining Room</div><div>OUT Outing</div></div> <div><div>S Salon</div><div>THR Theatre</div></div>				
10:30a	St.Alben Roe Church	10:30a	Noodle Volleyball	<b>FIT</b>												
2:00p	Rummikub and Puzzles	1:00p	Wildwood Warriors Group	<b>B</b>												
3:30p	Cornhole League	3:00p	Ice Cream Cones on the Patio	<b>2BL</b>												
5:30p	Sunday Show- Virgin River	5:30p	Cardinals Game Watch Party	<b>THR</b>												

All activities subject to change.